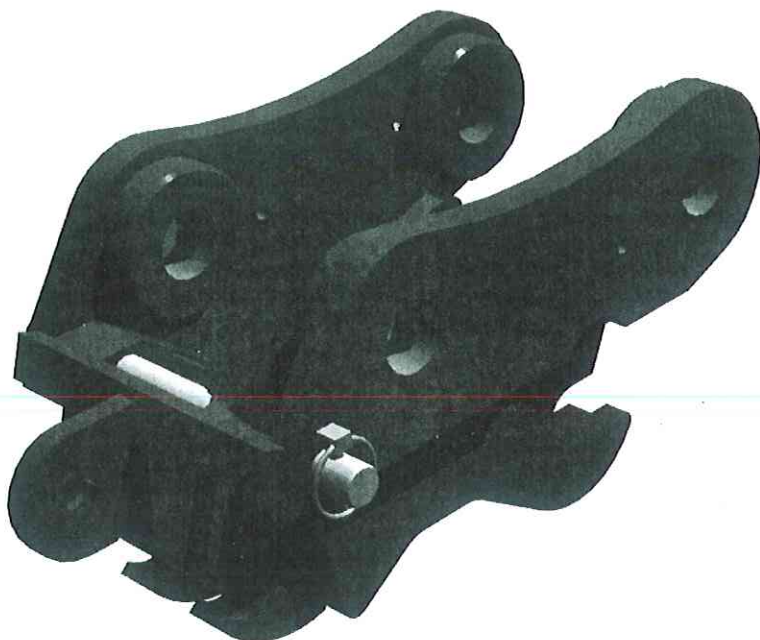


HYDRAULIC QUICKHITCH

OWNER'S MANUAL



This Manual Must be stored in the
machine cabin at all times

1. Introduction

Thank you for purchasing the HYDRAULIC QUICK HITCH by *ANT International*. This quick hitch is designed to provide you with safe and efficient change over of buckets and other implements to increase the versatility of your machine.

Please **read this manual carefully before you operate** the Quick Hitch and Store this manual inside the machine cabinet for future reference.

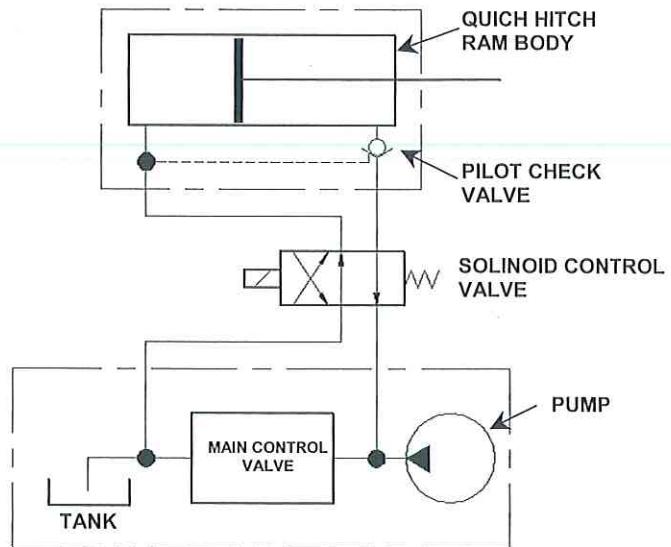
Should you have any comments regarding this product please contact us by the contact detail listed below. All feedbacks are welcome.



ABN. 63 094 369 552	
44 Suscatand St.	Tel: (07)37106700
Rocklea	Fax:(07)37106767
QLD	Email: sales@ant-get.com

2. Installation

- I. The quick hitch should always be connected to a hydraulic circuit with **“Full System Pressure”**, not **“Pilot Pressure”**. Detail of the circuit is illustrated below.
- II. Constant hydraulic pressure is required to ensure jaw remains firmly locked. However constant hydraulic flow is not required thus there is no reduction of power from the existing hydraulic system.
- III. When installing the quick hitch, care should be taken to make sure hydraulic hoses are fixed properly to avoid fretting or pinching of the hose which could lead to hose leaking or bursting.



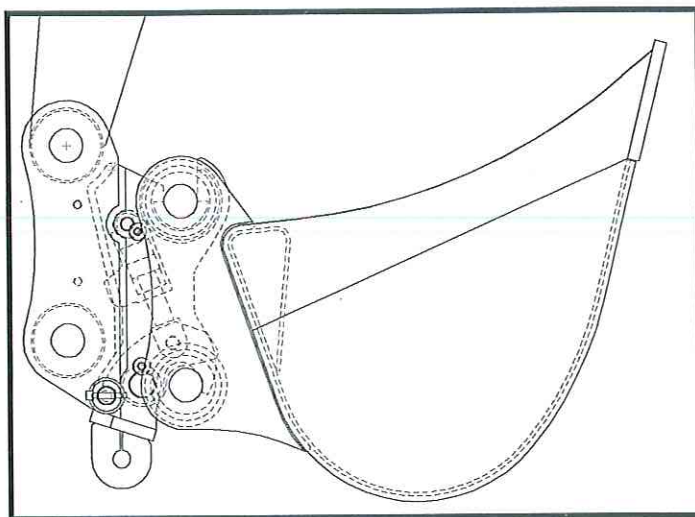
- IV. When installing the quick hitch, for safety purpose, it is strongly recommended to use a control switch (located inside the operator's cabin, used for locking and unlocking of the quick hitch that incorporates an **anti-trip guard** or **cover**, to prevent the unintentional unlocking of the quick hitch. It is also recommended

that the switch be connected to an audio alarm to notify the operator when the quick hitch is at unlocking position.

3. Operation

For un-attaching an implement:

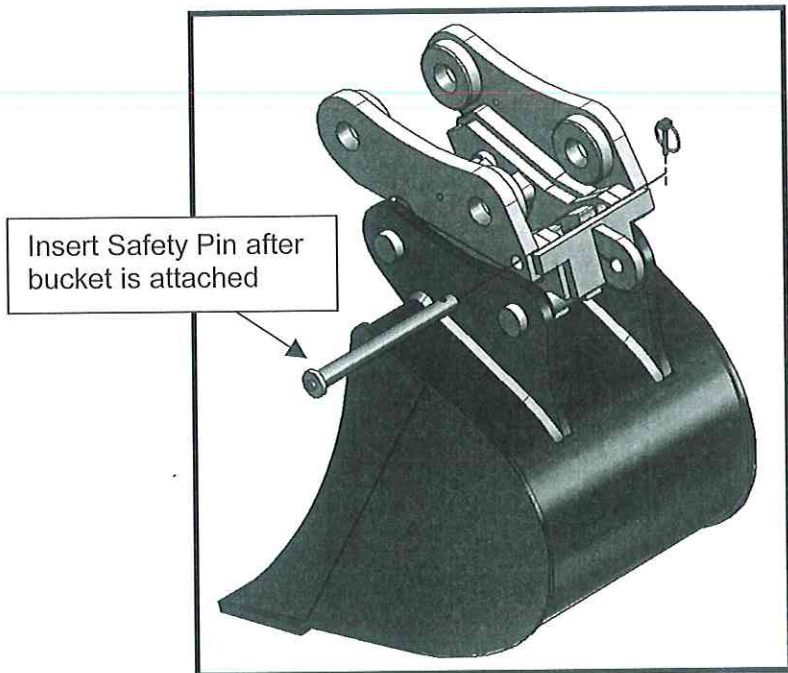
- I. Always lower the excavator arm and its attached implement close to the ground before unlocking.
- II. Always curl the hitch at an angle (as shown below) before unlocking to allow the front of the quick hitch facing up, this would help to prevent the implement to fall from the hitch when unlocking.



- III. Manually remove the safety pin from the quick hitch to allow locking jaw to move.
- IV. Turn the locking switch to “unlock” position. A beeping alarm should start to notify the operator that the locking jaw is in the “unlocking” position
- V. Gently lower the attachment onto the ground, curl the quick hitch at clockwise direction. The quick hitch should pivot around the front implement pin and un-attachment from the implement.

For attaching an implement:

- I. Maneuver the quick hitch so the front hook hitches onto the front implement pin.
- II. Curl the quick hitch at counter-clockwise direction. This would allow the quick hitch to sit on the rear implement pin.
- III. Turn the locking switch to "locking" position. The hydraulic cylinder should extend, pushing the clamping jaw against the rear implement pin. The fitment should be firm and without any movement. *Note: **Never start working if there's any play or movement in the attachment in the locked position, as by design the hydraulic cylinder should clamp the locking jaw firmly around the rear implement pin at all times. Please consult your distributor for immediate checkup should this occurs.***
- IV. Once the implement is correctly hooked up, place the safety pin back into the quick hitch and working can be commenced. (as shown below)



4. Safety

- I. Whist the hydraulic quick hitch offer quick and easy changing of the excavator implements, it is potentially dangerous if not operated property. Thus extra care should be taken to prevent any accidents.
- II. The operator should always ensure that personnel are kept away and most importantly, **never beneath the quick hitch** at all times.
- III. Where possible, always lower the attachment to near the ground when attaching and un-attaching.
- IV. Although the quick hitch has incorporated multiple safety guards against sudden release of attachment during operation, including a pilot operated check valve that will maintain a closed hydraulic circuit in the events of hydraulic failure, it is still strongly advised that the **safety pin must be used at all time** to prevent the un-attaching of the implement.
- V. Use the quick hitch **only** on implements that complies to its designed pickup dimension. This dimension can be found in the name plate on the side of the quick hitch. Never in any cases alter the quick hitch to fit implements of different size, as this would endanger the effectiveness and safety of the quick hitch. If alternation is required please contact the distributor or manufacturer for consultation.

5. Maintenance

- I. Pins inside the quick hitch should be greased regularly to minimize wear.
- II. Wear and tear on the quick hitch should be checked and monitored regularly. If there is excessive wear in the quick hitch that is believed to cause the implement to loosen, please contact the distributor to arrange for checkups or possible repairs.