

WHIRL-A-WAY OPERATIONS MANUAL



BE-1200WAW

BE-1600WAW

BE-1800WAW

BE-2000WAWY

BE-2200WAWG

BE-2000WAWS

BE-2400WAWS

16" - 24" SET-UP PROCEDURES

1



We recommend that you first fit the lower portion of the handle into the mounting brackets on the cover and secure with the bolts or the pins & clips.

2



Next, tighten the "fixed" hose end into the gun mounted onto the upper portion of the handle. Use teflon tape on the hose ends and tighten until snug. Do not overtighten.

3



Once this is complete, join the two sections of the handle together and secure with the bolt or the pin & clip.

4



Next, tighten the swivel end of the hose into the top of the rotary head until snug.

5



Turn the cover over and check to ensure that the nozzle tips are securely tightened and the spray pattern is in line with the rotary arm.

6



Inspect the rotary head to make sure the rotary arm spray tips are a minimum of 1" distance from the surface being cleaned.

OPERATING INSTRUCTIONS

The Surface Cleaning System you have purchased connects directly to your high pressure hose and pressure washer by means of quick couplers, operating to a maximum of 4000 PSI. Please note that the 12" Whirl-A-Way connects directly to a 1/4" quick connect coupler, operating to a maximum of 2500PSI.

This Whirl-a-Way is designed to operate with both hot & cold water pressure washers up to 180°F.

We recommend that you supply grease to the rotary head every 30 – 40 hours of use. Simply add a small squirt of automotive grease, do not overfill with grease as it will bog down the rotary head.

During operation, should you experience a buildup of small stones or other foreign material within the cover, we recommend that you simply tip the cleaner on its side at 45° which should expel any foreign materials. This will give longer wear to your tips and swivel arm, nozzles and brush skirt (if applicable).

The tips that have been installed on your surface cleaning system permit the use of your cleaner with a pressure washer producing up to 7 GPM at 4000 PSI. Please note that the 12" Whirl-A-Way can only be used with a pressure washer producing up to 2500 PSI. Periodically check the tips to ensure they are not plugged by dirt particles. As this can cause the rotary arm to stop spinning. Or stripping to be left on the surface being cleaned.

It is very important when operating your Whirl-a-Way, that you maintain a continuous motion to ensure an even clean. The distance of the nozzle tips from the surface can be adjusted by loosening the bolt on the rotary head mounting collar and adjusting the rotary head up or down. Be certain the allen head bolt is tightened again to prevent the rotary head from moving during operation. Please ensure that your rotary head is adjusted to maintain a minimum of 1" clearance between the spray tips and the surface being cleaned.

OPERATING INSTRUCTIONS

While operating your surface cleaning system, please ensure that the nylon brush skirt remains in contact with the surface being cleaned. Do not operate on overhead surfaces. We strongly recommend that safety eye goggles, gloves and work boots be worn when operating this Whirl-a-Way. Keep hands and feet away from the high pressure, high speed rotating arm that is protected by the plastic cover.

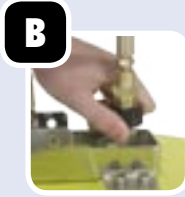
Should your surface cleaner not be used for long periods of time, it is recommended that you remove the hose from the top of the rotary head and a vegetable oil be used to lubricate the swivel head's internal parts. Manually turn the rotary arm to allow lubrication of all internal parts before storing.

You will quickly find your surface cleaning system a welcome addition to your pressure washing applications. It is designed to give you a safe and rapid method for cleaning hard surfaces, and will save you time in comparison to using a conventional gun and wand. The durability of this surface cleaning system is enhanced by the way it is handled by the operator. Please take care to ensure that the Whirl-a-Way is not continuously being swung against buildings, curbs, etc., which can damage the cover, castors and rotary arms. Also, be aware that the high speed rotating arm must not come in contact with rigid protruding objects which can quickly damage or completely break off the steel or stainless steel arm. Do not apply excessive weight to the Whirl-A-Way cover to prevent cracks or dents that could interfere with the rotary arm.

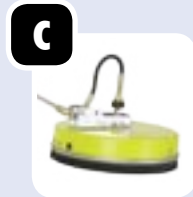
12" SETUP & APPLICATIONS

CONNECTING & RECONNECTING THE M22 HOSE

Before use with gun, lance, or longwand ensure that the M22 is connected properly.



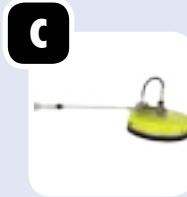
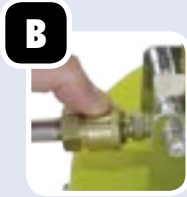
USE WITH A GUN AND LANCE



Connect to lance using q/c fittings on the lance and whirl-a-way. Ensure the M22 hose is connected properly before use.

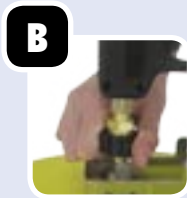
12" SETUP & APPLICATIONS

ATTACH TO LONGWAND



Attach to a longwand for cleaning hard to reach surfaces. Connect to longwand using the QC fittings on the longwand and Whirl-A-Way. Ensure the M22 hose is connected properly before use.

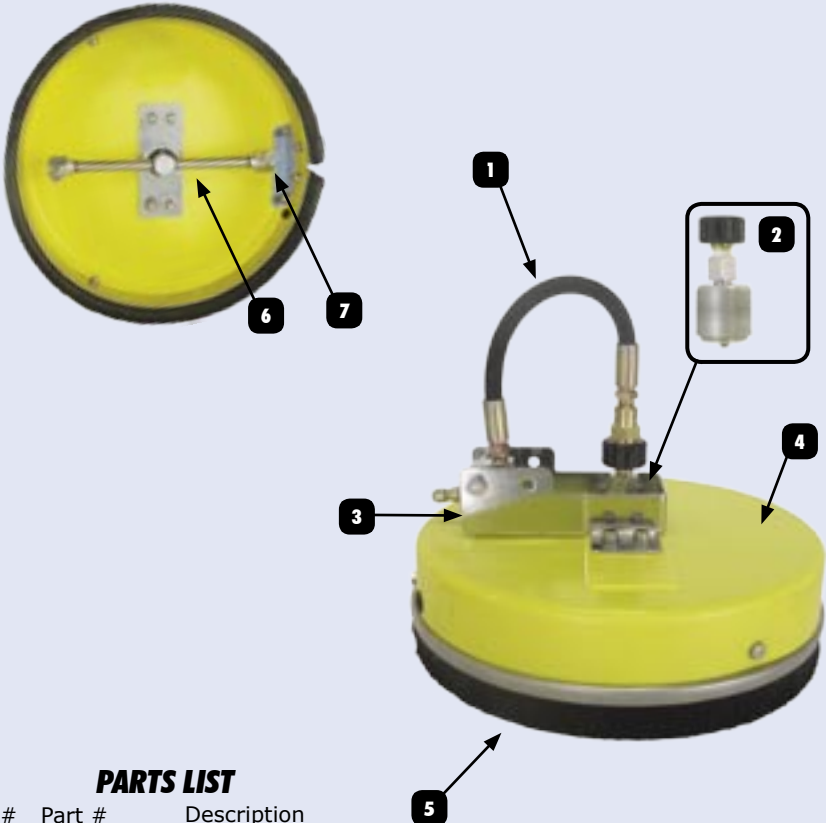
USE WITH A SPRAY GUN KIT (OPTIONAL KIT #85.400.066)



The 12" Whirl-A-Way is equipped for use with an optional spray gun kit P/N#85.400.066). Disconnect the M22 hose, then assemble the handle and spray gun as outlined.

PARTS BREAKDOWN

BE-1200WAW



PARTS LIST

No#	Part #	Description
1	85.214.012	Hose, 12" x 1/4"
2	85.790.021	Rotary Head, 12"
3	85.791.015	Mounting Bracket
4	85.419.012	Cover, ABS Nylon Material 12"
5	85.790.024	Nylon Brush Skirt, 12"
6	85.791.016	Rotary Arm
7	85.215.020	Nozzle, 15 Deg. 020

ROTARY HEAD REPAIR PARTS

No#	Part #	Description
1	85.790.023	Viton O-ring for Rotary Head
2	85.790.022	Rotary Head Repair Kit

PARTS LIST

BE-1600WAW

No#	Part #	Description
1	85.791.003	Bracket, Mounting Head 16" & 20"
2	85.790.004	Rotary Head, 16"
3	85.419.116	Mounting Blocks
4	85.238.057	Hose, 62" x 3/8"
5	85.202.017	Spray Gun
6	85.300.105	Plug, 3/8" MNPT
7	85.419.044	Handle, Upper 16"
8	85.419.042	Handle, Lower 16"
9	85.602.005	Hand Grip
10	85.790.012	Brush Skirt, 16"
11	85.419.021	Cover, Polypropylene 16"
12	85.791.009	Rotary Arm, For 16"
13	85.225.025	Nozzle, 25 Deg. 025

BE-2000WAWY

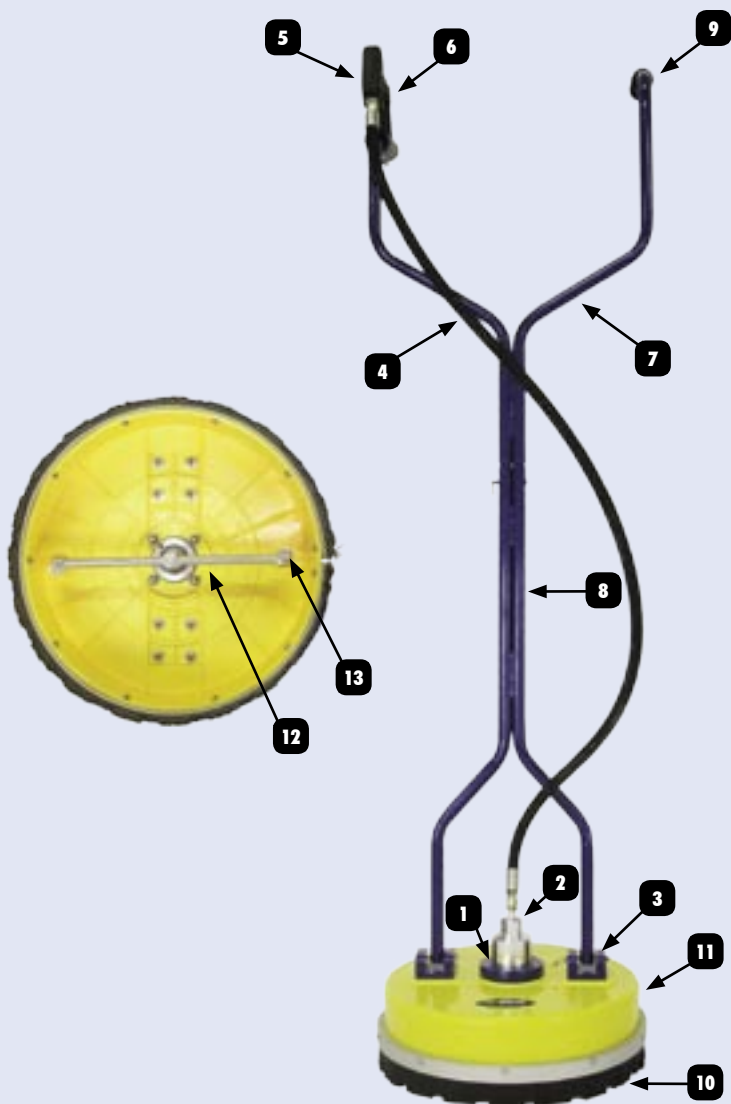
No#	Part #	Description
1	85.791.003	Bracket, Mounting Head 16" & 20"
2	85.790.004	Rotary Head, 20"
3	85.419.116	Mounting Blocks
4	85.238.057	Hose, 62" x 3/8"
5	85.202.115	Spray Gun
6	85.300.105	Plug, 3/8" MNPT
7	85.419.033	Handle, Upper 20"
8	85.419.032	Handle, Lower 20"
9	85.602.005	Hand Grip
10	85.790.013	Brush Skirt, 20"
11	85.419.020Y	Cover, Polypropylene 20"
12	85.791.013	Rotary Arm, 20"
13	85.225.025	Nozzle, 25 Deg. 025

ROTARY HEAD REPAIR PARTS

No#	Part #	Description
1	85.790.010	Rotary Head Rebuild Kit
2	85.790.001	Inlet Valve w/ O-Ring
3	85.790.002	Inlet Valve Viton O-Ring
4	85.790.011	Outlet Shaft

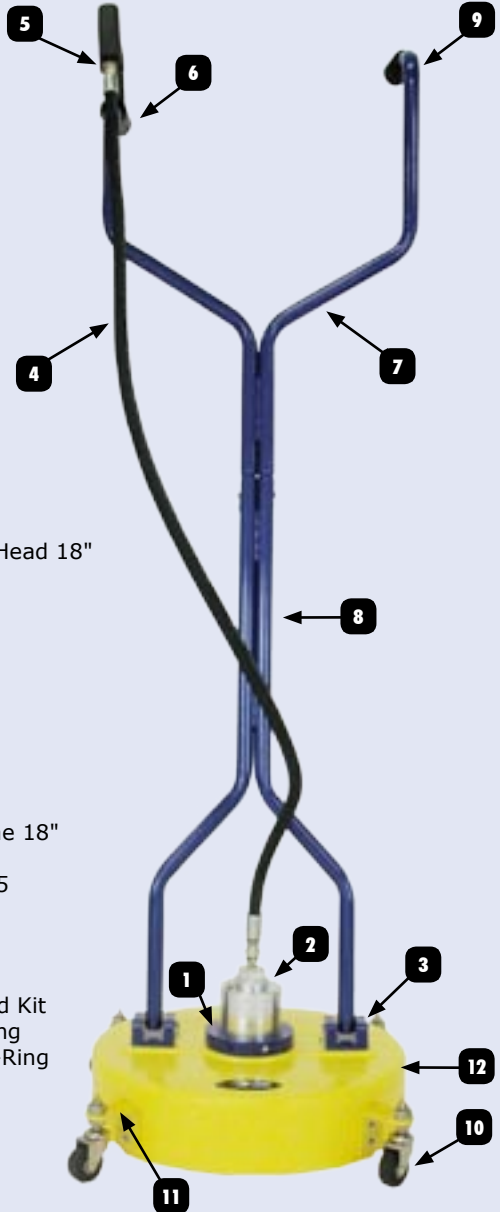
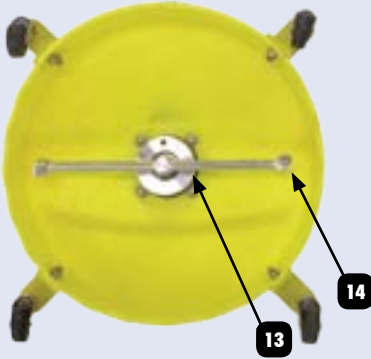
PARTS BREAKDOWN

BE-1600WAW
BE-2000WAWY



PARTS BREAKDOWN

BE-1800WAW



PARTS LIST

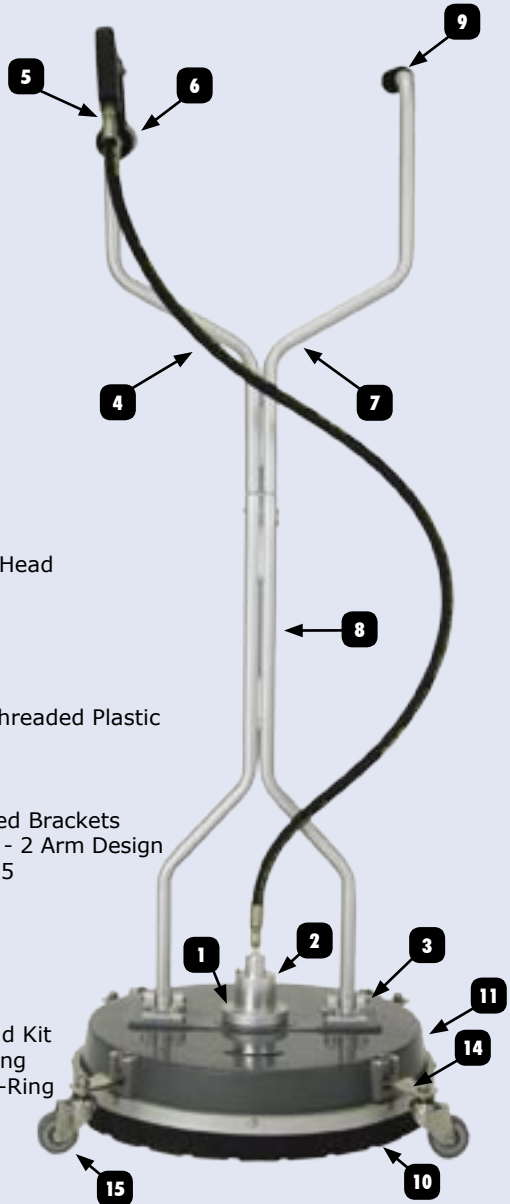
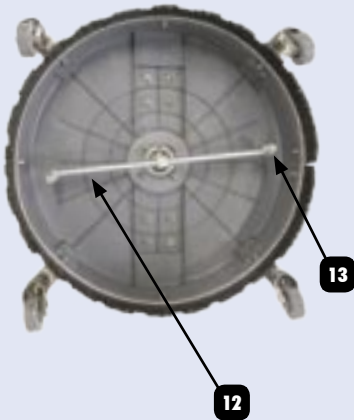
No#	Part #	Description
1	85.791.001	Bracket, Mounting Head 18"
2	85.790.006	Rotary Head, 18"
3	85.419.116	Mounting Blocks
4	85.238.057	Hose, 62" x 3/8"
5	85.202.115	Spray Gun
6	85.300.105	Plug, 3/8" MNPT
7	85.419.041	Handle, Upper 18"
8	85.419.040	Handle, Lower 18"
9	85.602.005	Hand Grip
10	85.790.007	Castor Wheel
11	85.419.023	Castor Bracket
12	85.419.019	Cover, Polypropylene 18"
13	85.791.007	Rotary Arm
14	85.225.025	Nozzle, 25 Deg. 025

ROTARY HEAD REPAIR PARTS

No#	Part #	Description
1	85.790.010	Rotary Head Rebuild Kit
2	85.790.001	Inlet Valve w/ O-Ring
3	85.790.002	Inlet Valve Viton O-Ring
4	85.790.011	Outlet Shaft

PARTS BREAKDOWN

BE-2200WAWG



PARTS LIST

No#	Part #	Description
1	85.791.002	Bracket, Mounting Head
2	85.790.004	Rotary Head
3	85.419.119	Mounting Block
4	85.238.057	Hose, 62" x 3/8"
5	85.202.116	Spray Gun
6	85.300.105	Plug, 3/8" MNPT
7	85.419.038	Upper Handle w/ Threaded Plastic
8	85.419.039	Lower Handle
9	85.602.005	Hand Grip
10	85.790.026	Nylon Brush
11	85.419.013	22" Cover w/ Molded Brackets
12	85.791.029	Rotary Arm for 22" - 2 Arm Design
13	85.225.025	Nozzle, 25 Deg. 025
14	85.419.045	Castor Bracket
15	85.790.009	Castor

ROTARY HEAD REPAIR PARTS

No#	Part #	Description
1	85.790.010	Rotary Head Rebuild Kit
2	85.790.001	Inlet Valve w/ O-Ring
3	85.790.002	Inlet Valve Viton O-Ring
4	85.790.011	Outlet Shaft

PARTS BREAKDOWN

BE-2000WAWS

No#	Part #	Description
1	85.791.002	Bracket, Mounting Head 20"
2	85.790.004	Rotary Head, 20"
3	85.419.117	Mounting Blocks
4	85.238.057	Hose, 62" x 3/8"
5	85.202.115	Spray Gun
6	85.300.105S	Plug, 3/8" MNPT SS
7	85.419.036	Handle, Upper 20"
8	85.419.035	Handle, Lower 20"
9	85.602.005	Hand Grip
10	85.790.014S	Brush Skirt, 20" Stainless Steel
11	85.790.009	Castor Wheel
12	85.419.020S	Cover, Stainless Steel 20"
13	85.791.012	Rotary Arm, 3-Way
14	85.225.020	Nozzle, 25 Deg. 020

BE-2400WAWS

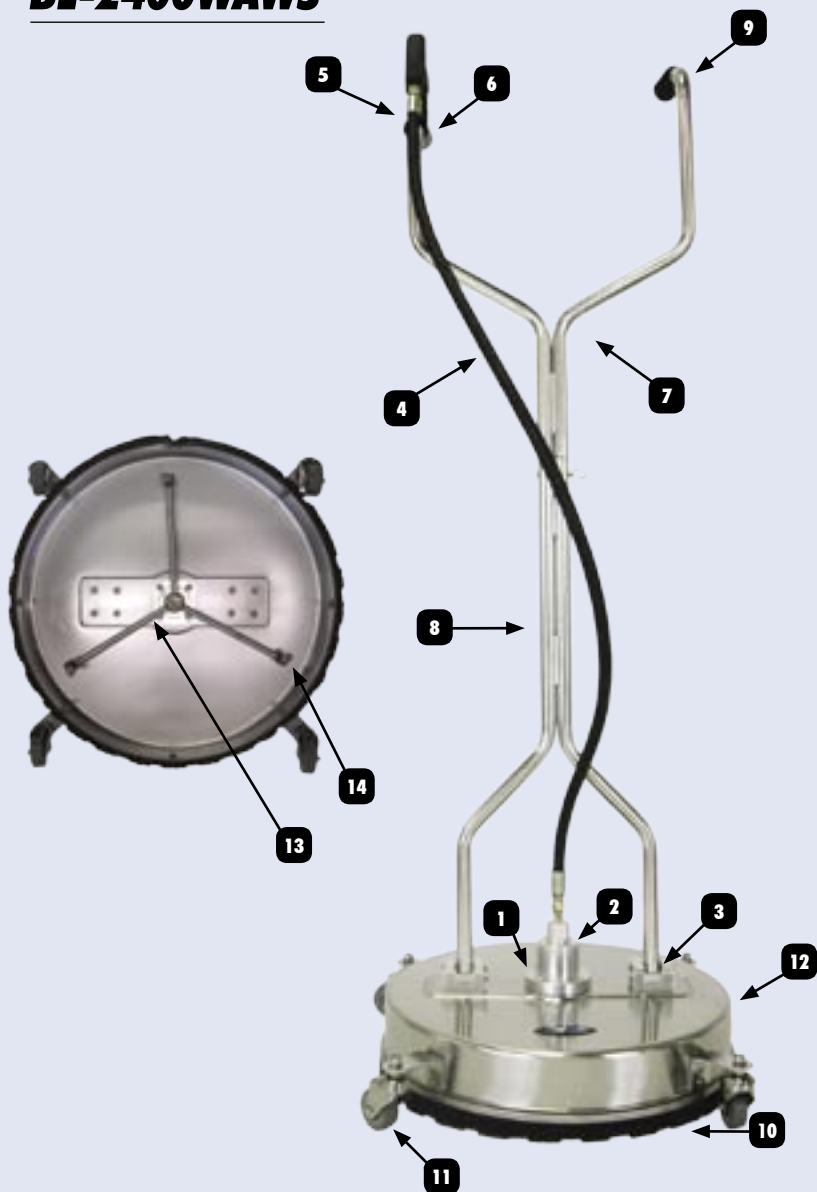
No#	Part #	Description
1	85.791.002	Bracket, Mounting Head 24"
2	85.790.004	Rotary Head, 24"
3	85.419.117	Mounting Blocks
4	85.238.057	Hose, 62" x 3/8"
5	85.202.115	Spray Gun
6	85.300.105S	Plug, 3/8" MNPT SS
7	85.419.036	Handle, Upper 24"
8	85.419.035	Handle, Lower 24"
9	85.602.005	Hand Grip
10	85.790.019S	Brush Skirt, 24"
11	85.790.020	Castor Wheel
12	85.419.024S	Cover, Stainless Steel 24"
13	85.791.010S	Rotary Arm, 24"
14	85.225.020	Nozzle, 25 Deg. 020

ROTARY HEAD REPAIR PARTS

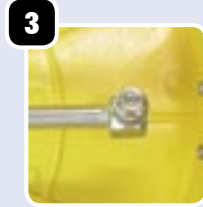
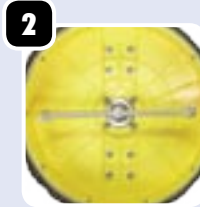
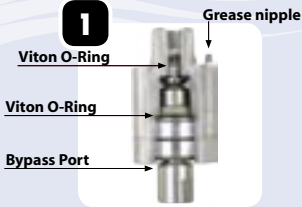
No#	Part #	Description
1	85.790.010	Rotary Head Rebuild Kit
2	85.790.001	Inlet Valve
3	85.790.002	Inlet Valve Viton O-Ring
4	85.790.011	Outlet Shaft

PARTS BREAKDOWN

BE-2000WAWS **BE-2400WAWS**



TROUBLE SHOOTING



1) If water is leaking from the bypass port in the bottom of the rotary head: Inspect the viton O-Ring in the rotary head.

2) Rotary Arm doesn't spin:

- Remove, inspect and clean nozzles. Replace if damaged
- Rotary head may not have been greased.
- Ensure there is no water leaking from the bypass port on the rotary head.

3) Leaves stripping:

- Ensure nozzles aren't damaged or plugged.
- Ensure rotary arms are straight.

ROTARY HEAD REPAIR PARTS

A repair kit for this Whirl-a-Way's rotary head is available. If you encounter problems with the rotary head after the six month warranty has expired, this repair kit (part #85.790.010) allows you to replace the inner components very quickly.

The rotary head has a snap ring on the bottom holding all the bearings inside. By removing the snap ring and washer, you can tap off the outer shell with a rubber hammer while the output shaft is held in a vice. The rotary head repair kit can then be used to replace the worn items inside the rotary head shell.

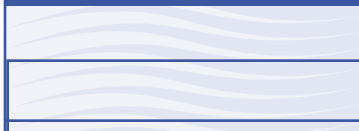
WARRANTY

The rotary head has a six-month warranty from the date of purchase. Should you encounter problems with the rotary head within that time period, simply return the defective part for warranty to the place of purchase. If you encounter problems after the six month period has lapsed, we sell a rotary head repair kit. You can use this kit to replace the components inside the rotary head very quickly.

There is no warranty on the nylon brush ring.

All other components of the surface cleaning system have a 90-day warranty against manufacturer's defects only.

NOTES



A series of horizontal lines for writing notes, with a decorative wavy pattern in the top left corner.